

These are the notes referred to on the following official copy

The electronic official copy of the title plan follows this message.

Please note that this is the only official copy we will issue. We will not issue a paper official copy.

This official copy was delivered electronically and when printed will not be to scale. You can obtain a paper official copy by ordering one from HM Land Registry.

This official copy is issued on 27 October 2023 shows the state of this title plan on 27 October 2023 at 15:16:12. It is admissible in evidence to the same extent as the original (s.67 Land Registration Act 2002). This title plan shows the general position, not the exact line, of the boundaries. It may be subject to distortions in scale. Measurements scaled from this plan may not match measurements between the same points on the ground.

This title is dealt with by the HM Land Registry, Kingston Upon Hull Office .

© Crown copyright. Produced by HM Land Registry. Reproduction in whole or in part is prohibited without the prior written permission of Ordnance Survey. Licence Number 100026316.

H.M. LAND REGISTRY

TITLE NUMBER

HS 241239

ORDNANCE SURVEY
PLAN REFERENCE

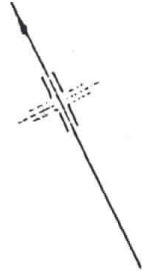
SE 9407 SE 9506 SE 9507

Scale
1/2500

COUNTY HUMBERSIDE

DISTRICT GLANFORD

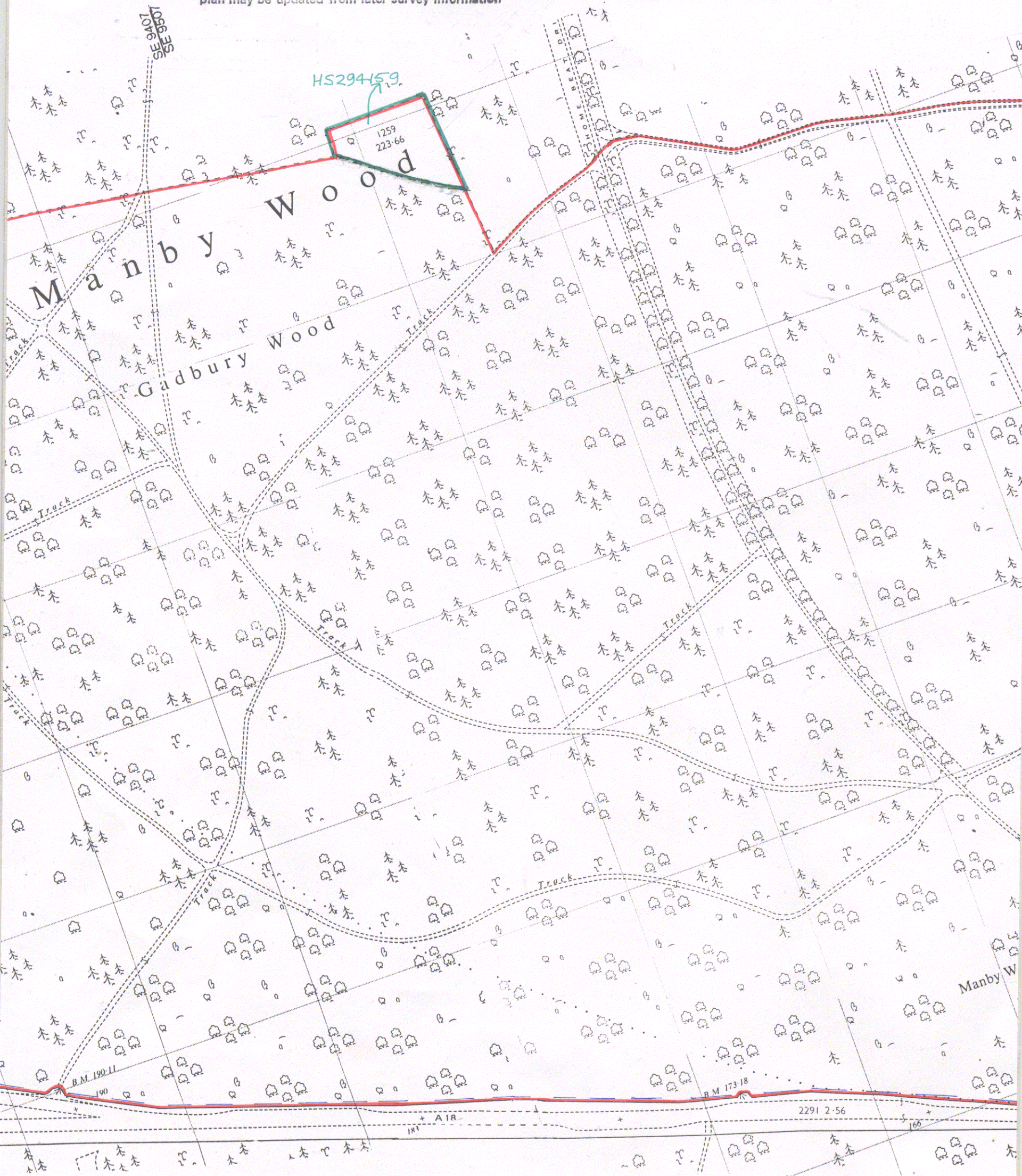
© Crown copyright

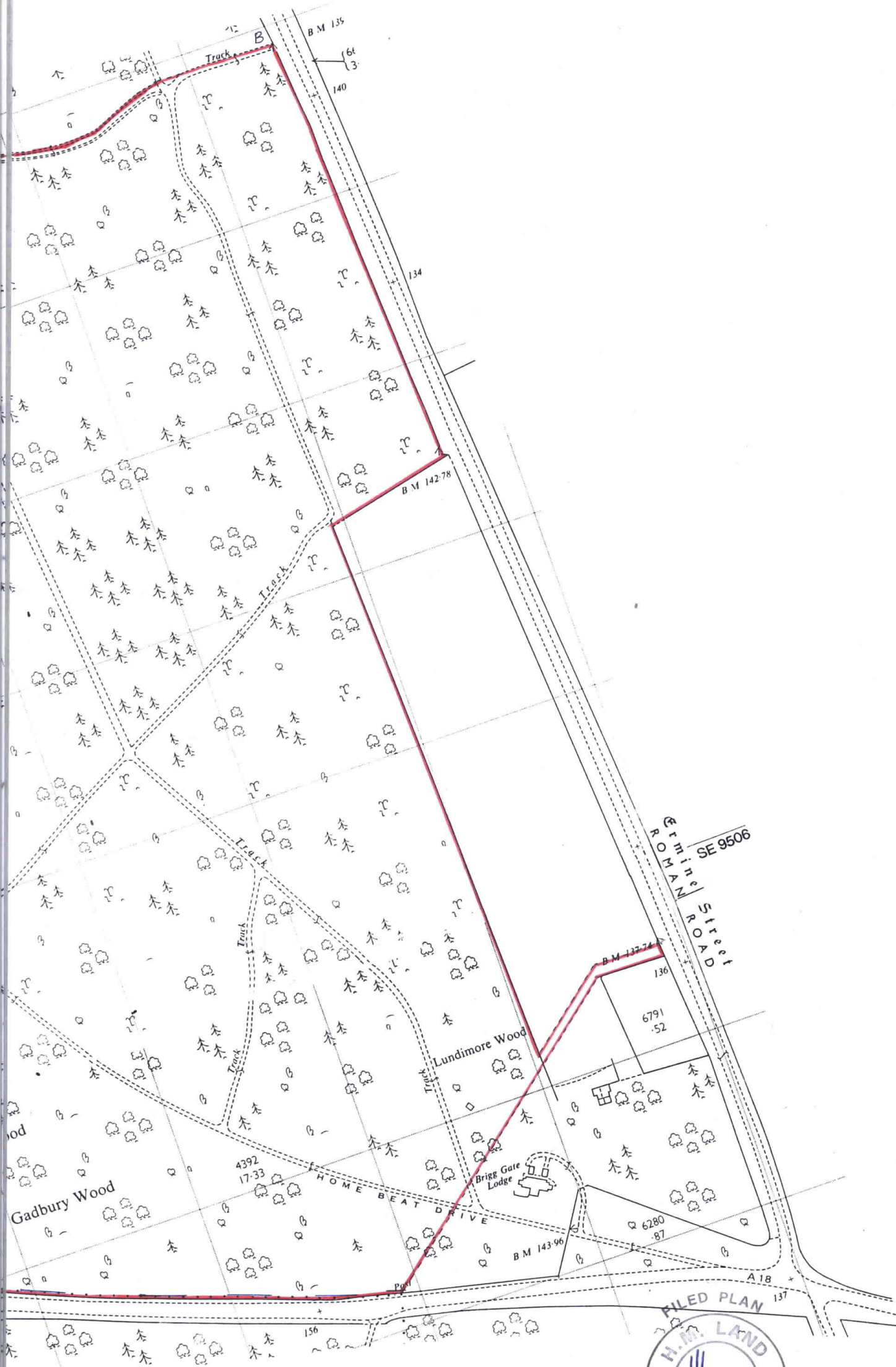


4418 10-00

4116 36

The boundaries shown by dotted lines have been plotted from the plans on the deeds. The title plan may be updated from later survey information





These are the notes referred to on the following official copy

The electronic official copy of the title plan follows this message.

Please note that this is the only official copy we will issue. We will not issue a paper official copy.

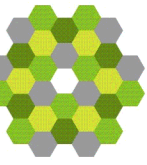
This official copy was delivered electronically and when printed will not be to scale. You can obtain a paper official copy by ordering one from HM Land Registry.

This official copy is issued on 27 October 2023 shows the state of this title plan on 27 October 2023 at 15:15:10. It is admissible in evidence to the same extent as the original (s.67 Land Registration Act 2002). This title plan shows the general position, not the exact line, of the boundaries. It may be subject to distortions in scale. Measurements scaled from this plan may not match measurements between the same points on the ground.

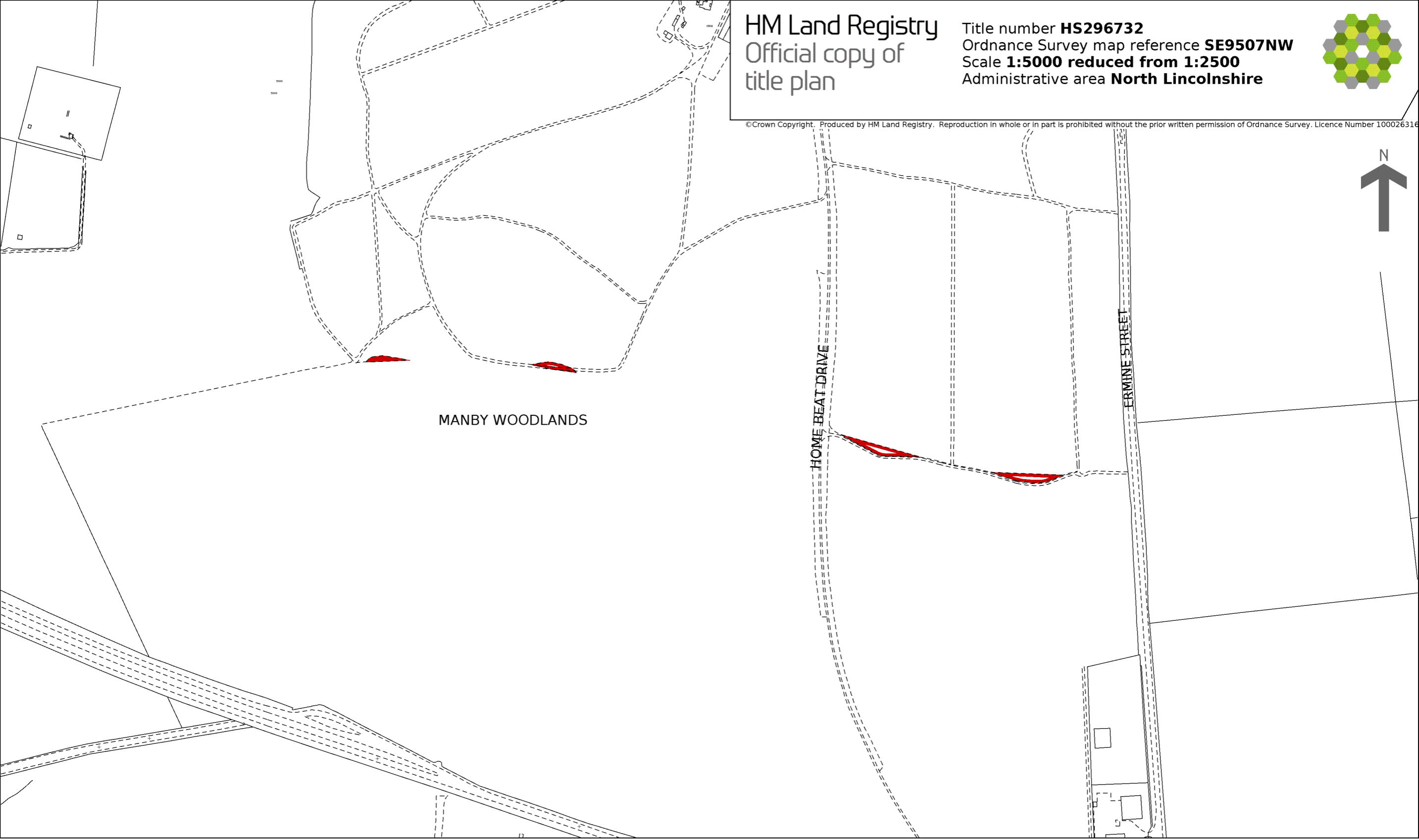
This title is dealt with by the HM Land Registry, Kingston Upon Hull Office .

HM Land Registry
Official copy of
title plan

Title number **HS296732**
Ordnance Survey map reference **SE9507NW**
Scale **1:5000 reduced from 1:2500**
Administrative area **North Lincolnshire**



©Crown Copyright. Produced by HM Land Registry. Reproduction in whole or in part is prohibited without the prior written permission of Ordnance Survey. Licence Number 100026316



These are the notes referred to on the following official copy

The electronic official copy of the title plan follows this message.

Please note that this is the only official copy we will issue. We will not issue a paper official copy.

This official copy was delivered electronically and when printed will not be to scale. You can obtain a paper official copy by ordering one from HM Land Registry.

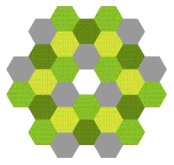
This official copy is issued on 27 October 2023 shows the state of this title plan on 27 October 2023 at 15:14:03. It is admissible in evidence to the same extent as the original (s.67 Land Registration Act 2002). This title plan shows the general position, not the exact line, of the boundaries. It may be subject to distortions in scale. Measurements scaled from this plan may not match measurements between the same points on the ground.

This title is dealt with by the HM Land Registry, Kingston Upon Hull Office .

HM Land Registry

Official copy of title plan

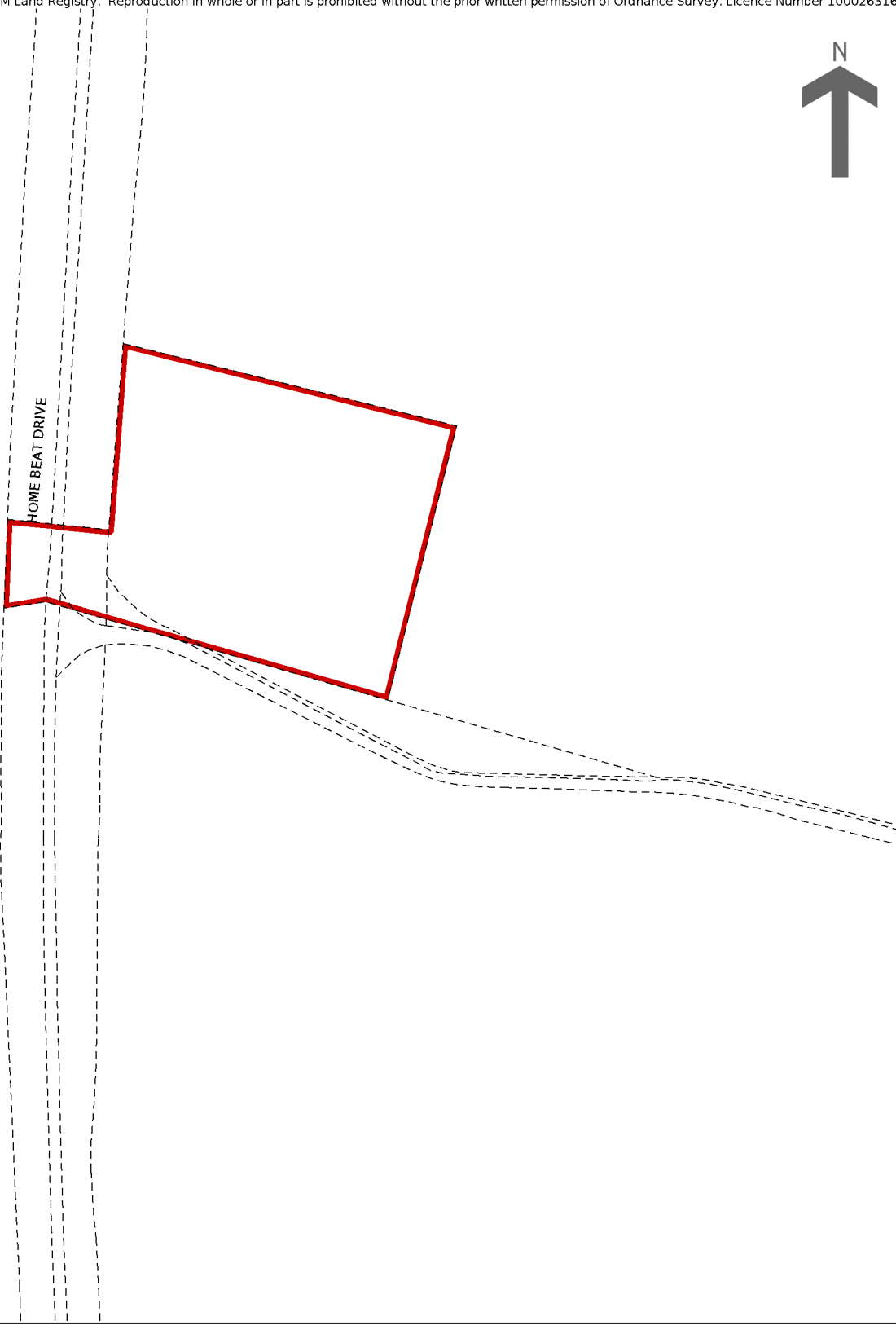
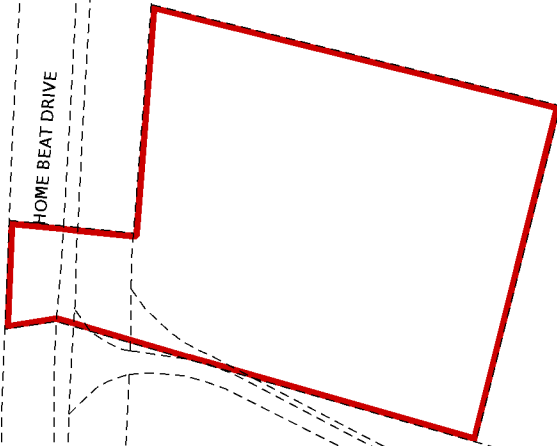
Title number **HS331738**
Ordnance Survey map reference **SE9507NW**
Scale **1:1250 enlarged from 1:2500**
Administrative area **North Lincolnshire**



© Crown Copyright. Produced by HM Land Registry. Reproduction in whole or in part is prohibited without the prior written permission of Ordnance Survey. Licence Number 100026316



HOME BEAT DRIVE



These are the notes referred to on the following official copy

The electronic official copy of the title plan follows this message.

Please note that this is the only official copy we will issue. We will not issue a paper official copy.

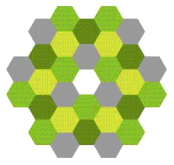
This official copy was delivered electronically and when printed will not be to scale. You can obtain a paper official copy by ordering one from HM Land Registry.

This official copy is issued on 27 October 2023 shows the state of this title plan on 27 October 2023 at 15:12:33. It is admissible in evidence to the same extent as the original (s.67 Land Registration Act 2002). This title plan shows the general position, not the exact line, of the boundaries. It may be subject to distortions in scale. Measurements scaled from this plan may not match measurements between the same points on the ground.

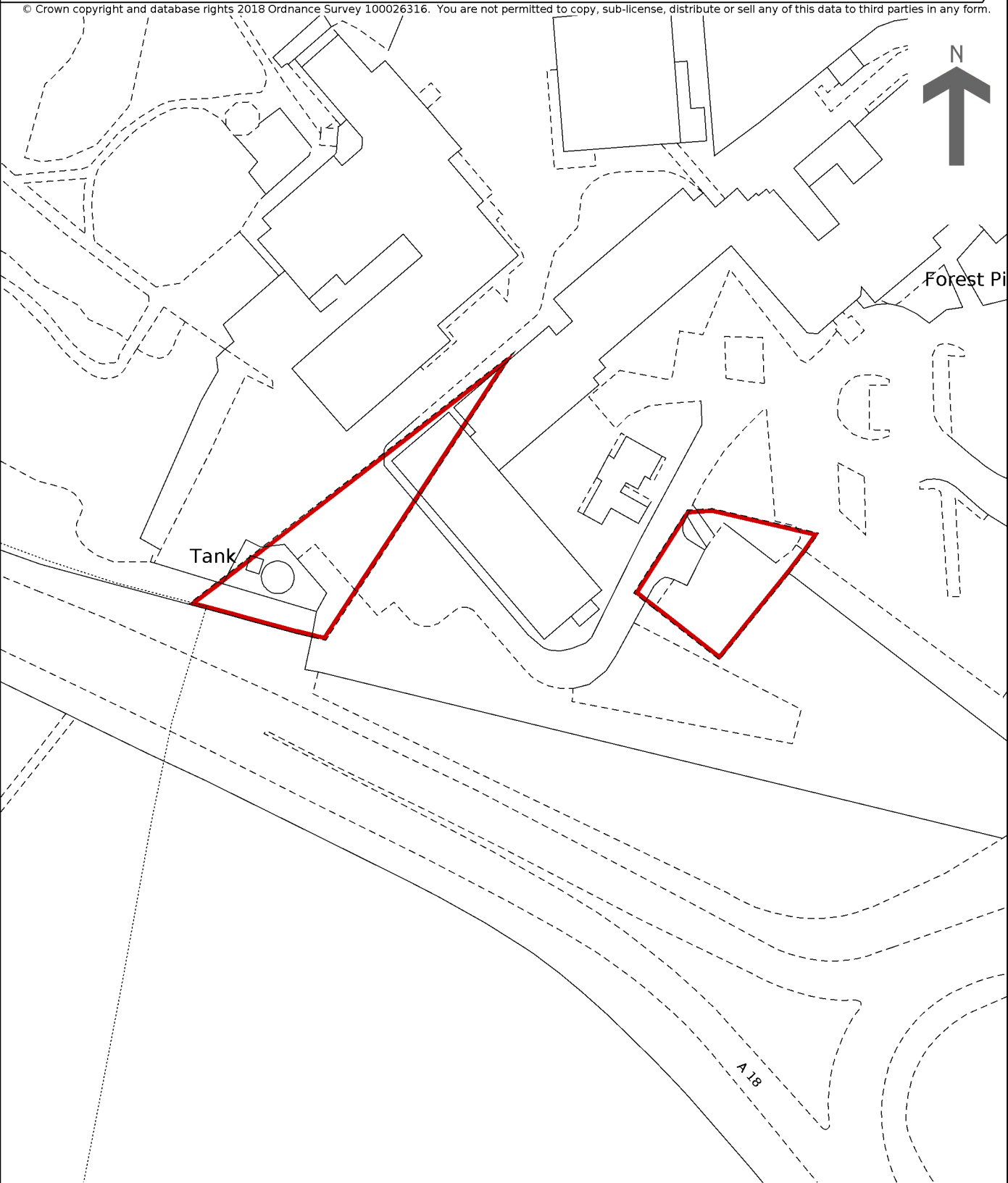
This title is dealt with by the HM Land Registry, Kingston Upon Hull Office .

HM Land Registry Official copy of title plan

Title number **HS389512**
Ordnance Survey map reference **SE9506NE**
Scale **1:1250 enlarged from 1:2500**
Administrative area **North Lincolnshire**



© Crown copyright and database rights 2018 Ordnance Survey 100026316. You are not permitted to copy, sub-license, distribute or sell any of this data to third parties in any form.



These are the notes referred to on the following official copy

The electronic official copy of the title plan follows this message.

Please note that this is the only official copy we will issue. We will not issue a paper official copy.

This official copy was delivered electronically and when printed will not be to scale. You can obtain a paper official copy by ordering one from HM Land Registry.

This official copy is issued on 27 October 2023 shows the state of this title plan on 27 October 2023 at 15:18:12. It is admissible in evidence to the same extent as the original (s.67 Land Registration Act 2002). This title plan shows the general position, not the exact line, of the boundaries. It may be subject to distortions in scale. Measurements scaled from this plan may not match measurements between the same points on the ground.

This title is dealt with by the HM Land Registry, Kingston Upon Hull Office .

© Crown copyright. Produced by HM Land Registry. Reproduction in whole or in part is prohibited without the prior written permission of Ordnance Survey. Licence Number 100026316.

H.M. LAND REGISTRY		TITLE NUMBER	
		HS 147553	
ORDNANCE SURVEY PLAN REFERENCE	SE 9506	Scale 1/2500	
COUNTY	HUMBERSIDE	DISTRICT	GLANFORD
			© Crown Copyright 19

The boundaries shown by dotted lines have been plotted from the plans on the deeds. The title plan may be updated from later survey information

